

13 Willow Tree Close, West Lynn PE34 3QW

£230,000

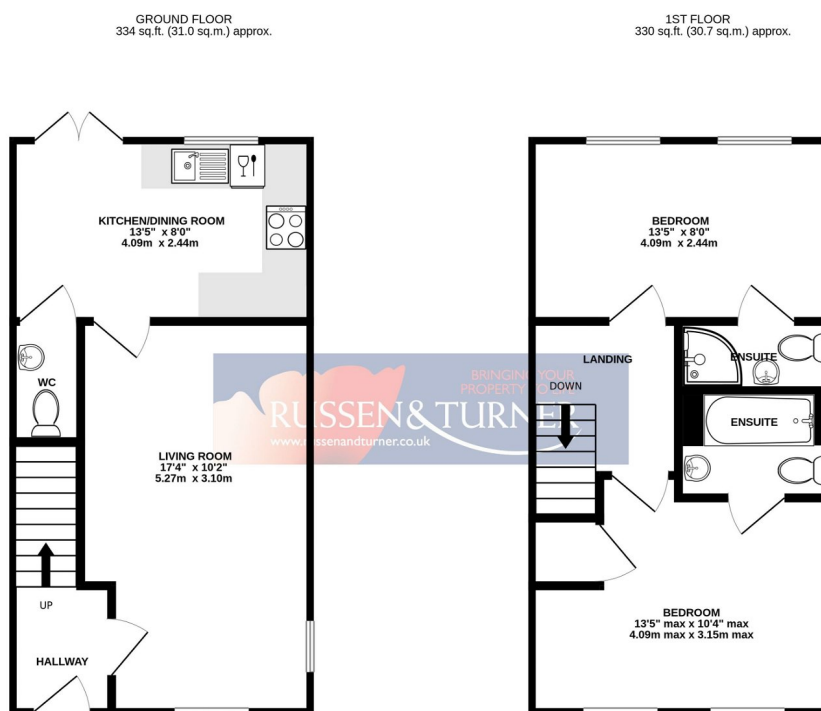
 2  2  1



A stylish and contemporary first home, a short walk from the heart of the village, offering generous living accommodation, two double bedrooms both with en-suites, off-road parking and a garden that backs on to open fields.

Key Features

- Semi-Detached House
- Two Double Bedrooms
- Two Modern En-suites
- Generous Rear Garden
- Backing on to Open Fields
- Off-road Parking
- Gas Central Heating
- Superb Presentation - Ready to Move Straight Into
- Set on Edge of Village
- Check out the video tour on Youtube



TOTAL FLOOR AREA: 664 sq.ft. (61.7 sq.m.) approx.

Whilst every attempt has been made to ensure the accuracy of the floorplan contained here, measurements of doors, windows, rooms and any other items are approximate and no responsibility is taken for any error, omission or mis-statement. This plan is for illustrative purposes only and should be used as such by any prospective purchaser. The services, systems and appliances shown have not been tested and no guarantee as to their operability or efficiency can be given.
Made with Metropix ©2024